



# **Partnering with Business**

**Shannon Roy, State Library**

**Dinah Ramirez, Cengage**

# **Why Partner with Business?**

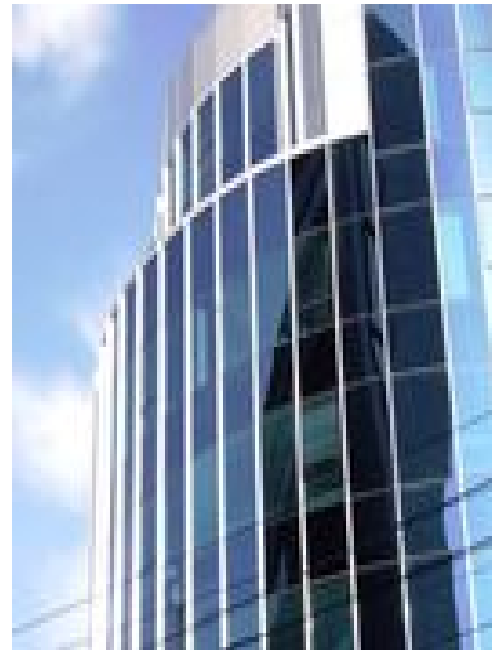
**Business people are an important part of the community that are not yet effectively served.**

**Business people have the power to become very good library supporters.**

# **Why Partner with Business?**

**It is part of  
community economic  
development.**

**A healthy business  
community creates  
jobs, products,  
services, and  
entertainment for a  
higher quality of life.**



# **Our Future**

**For public libraries to have a viable future, they will increasingly have to function as community centers that are essential to the populations they serve.**

# What are the Barriers?



# Barriers

**We don't  
have the  
time.**



# **Barriers**

**We don't know the  
people**

# **Barriers**

**We don't know the  
resources**



**For Example,**



# **The Good News**



**Libraries of all  
sizes have more  
free online  
resources than  
ever before**

# If you **HAVE** a **Business Center**

**What comes  
next?**



# **Pathway for Small Business**

**Discovery and Assessment**  
**Library Collections**  
**Training and Programming**  
**Collaboration**  
**Marketing**

**Stay in touch....**

**Shannon Roy**

**Continuing Education Coordinator**

**State Library of Kansas**

**[Shannon.Roy@library.ks.gov](mailto:Shannon.Roy@library.ks.gov)**

**785-296-2148**