

# Are You Trustee-Worthy? Ethics for Trustees

5.25.10 | Everyday Ethics for Libraries series  
Online in Wimba – WebJunction's Online Room - Ad Astra





# Who ya gonna call?




# Topeka & Shawnee County Public Library

- Library Board of Trustees
- Friends of the Library Board
- The Library Foundation Board






# Why Are You a Library Trustee?


“The library has books I don't approve of.”

“Somebody asked me.”

“I've just always loved the library.”

“The library is important to the community.”

“The library has meant so much to me and my family. I want to give back.”







### An Ethical Board

- Has a Code of Ethics
- Reviews it regularly
- Reviews its decisions and the behavior of its members
- Takes the appropriate action if a trustee behaves unethically

TOPEKA AND SHAWNEE COUNTY PUBLIC LIBRARY

### Question for You as a Trustee

Do I know my library's mission?

TOPEKA AND SHAWNEE COUNTY PUBLIC LIBRARY

### Trustee Ethics Checklist

- Listen carefully

TOPEKA AND SHAWNEE COUNTY PUBLIC LIBRARY

### Topeka and Shawnee County Public Library's Mission

**Your Place.**  
Stories you want, information you need, connections you seek.

TOPEKA AND SHAWNEE COUNTY PUBLIC LIBRARY

### Trustee Ethics Checklist

- Respect opinions

TOPEKA AND SHAWNEE COUNTY PUBLIC LIBRARY

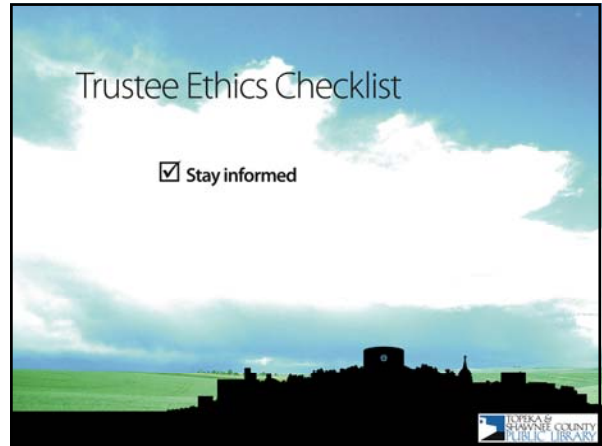


Trustee Ethics Checklist

Support decisions

LIBRARY OF SHAWNEE COUNTY PUBLIC LIBRARY

This slide features a background image of a city skyline silhouette against a bright blue sky with white clouds. The text is centered in the upper half of the slide.



Trustee Ethics Checklist

Stay informed

LIBRARY OF SHAWNEE COUNTY PUBLIC LIBRARY

This slide features a background image of a city skyline silhouette against a bright blue sky with white clouds. The text is centered in the upper half of the slide.



Trustee Ethics Checklist

Respect the board's authority

LIBRARY OF SHAWNEE COUNTY PUBLIC LIBRARY

This slide features a background image of a city skyline silhouette against a bright blue sky with white clouds. The text is centered in the upper half of the slide.

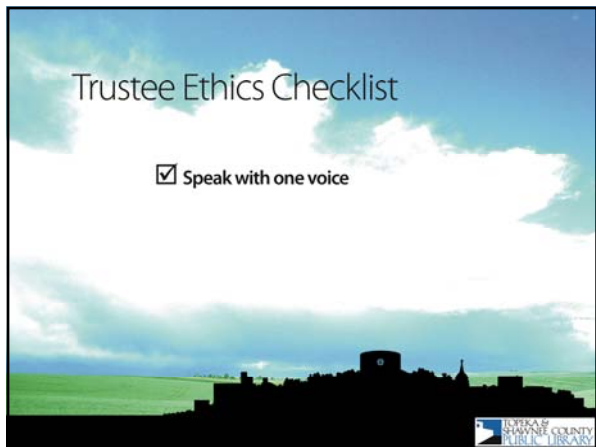


Trustee Ethics Checklist

Participate actively

LIBRARY OF SHAWNEE COUNTY PUBLIC LIBRARY

This slide features a background image of a city skyline silhouette against a bright blue sky with white clouds. The text is centered in the upper half of the slide.



Trustee Ethics Checklist

Speak with one voice

LIBRARY OF SHAWNEE COUNTY PUBLIC LIBRARY

This slide features a background image of a city skyline silhouette against a bright blue sky with white clouds. The text is centered in the upper half of the slide.

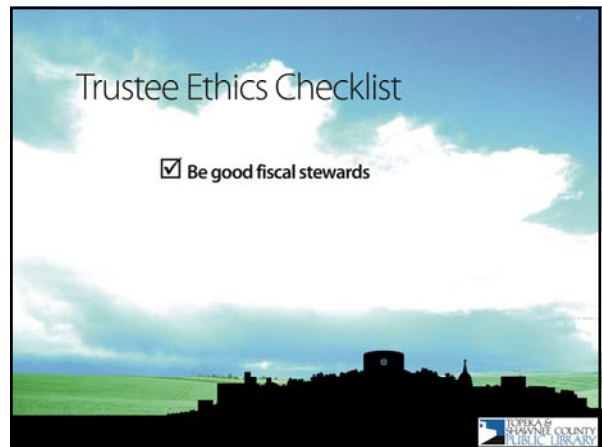
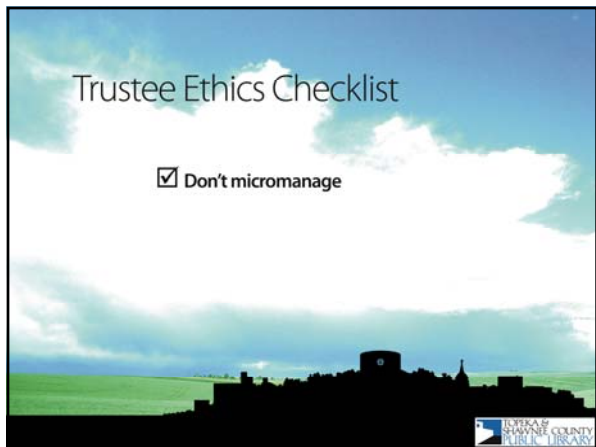
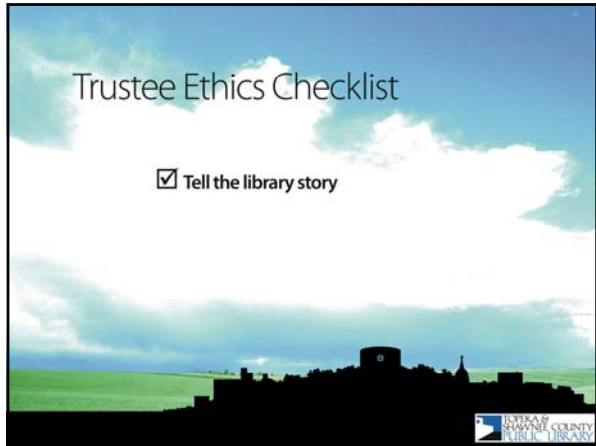


Trustee Ethics Checklist

Communicate issues that could have a negative effect

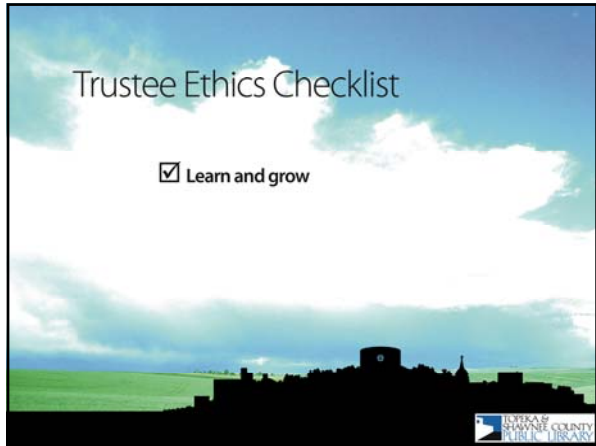
LIBRARY OF SHAWNEE COUNTY PUBLIC LIBRARY

This slide features a background image of a city skyline silhouette against a bright blue sky with white clouds. The text is centered in the upper half of the slide.



Trustee Ethics Checklist

Learn and grow



UNIVERSITY OF SHARPSHIRE COUNTY PUBLIC LIBRARY

Trustee Ethics Checklist

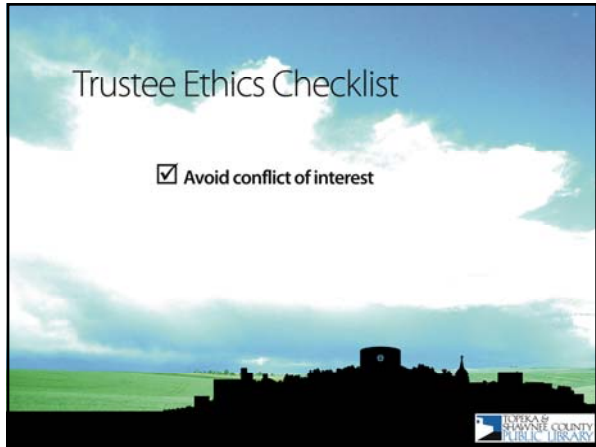
Uphold confidentiality



UNIVERSITY OF SHARPSHIRE COUNTY PUBLIC LIBRARY

Trustee Ethics Checklist

Avoid conflict of interest



UNIVERSITY OF SHARPSHIRE COUNTY PUBLIC LIBRARY

Trustee Ethics Checklist

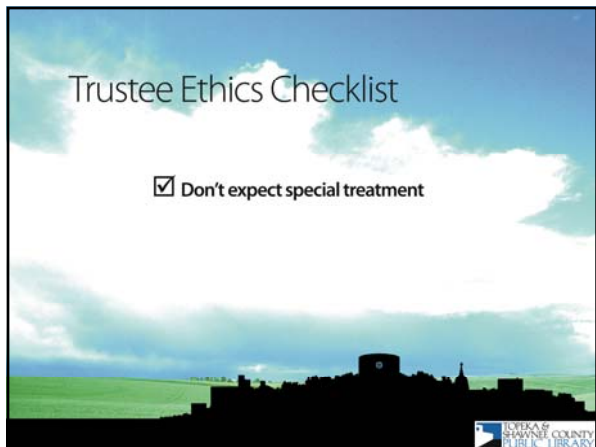
Respect the spirit and intent of the Open Meetings law



UNIVERSITY OF SHARPSHIRE COUNTY PUBLIC LIBRARY

Trustee Ethics Checklist

Don't expect special treatment



UNIVERSITY OF SHARPSHIRE COUNTY PUBLIC LIBRARY

Rules Don't Ensure Ethical Behavior



UNIVERSITY OF SHARPSHIRE COUNTY PUBLIC LIBRARY

# Failure to Engage




# Personal life

## It's All in the Family

Library board





# The City Council Steps In

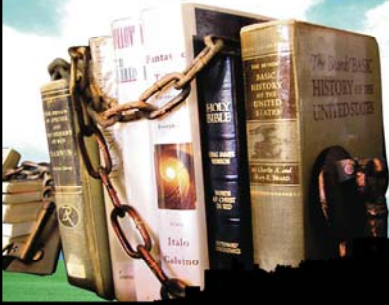




# Question for the Board

Why should someone serve on a board?




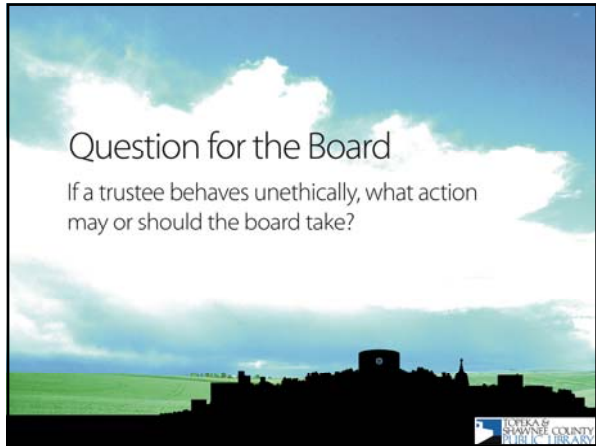
# Child Protection or Censorship?

# Question for the Board


Why should someone not serve on a board?





Question for the Board

If a trustee behaves unethically, what action may or should the board take?



**Questions?**

Gina Millsap  
gmillsap@tscpl.org  
785 580-4480  
twitter: GinaMillsap



 Thank you!



Question for You as a Trustee

Do I understand and support all of the library's policies (not just the ones I agree with)?



Question for You as a Trustee

What if my personal/social/religious beliefs are in conflict with the library's mission and policy?

